

02.
ABOUT US #1

A LITTLE BACKGROUND INFORMATION ON YOUR TRUSTED TOOLING AND MACHINERY SUPPLIER.

04.
WELCOME TO ZAFFERANI #2

ENTER THE WORLD OF ZAFFERANI AND MEET ONE OF OUR GREATEST PARTNERS IN THE WORLD OF GLASS AND STONE PROCESSING MACHINERY.

05.
AZV MILL #3

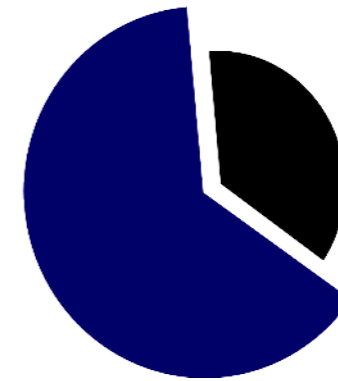
EVERYTHING ABOUT THE AZV MILL EXPLAINED.

10.
AFTERCARE #4

OUR ENGINEERING SERVICE & REPAIRS - HOW WE DO SUPPORT

14.
QUOTE & WARRANTY #5

VETRO TOOLING



Vetro Tooling has a successful background in the glass trade, not only providing tooling but having its own state-of-the-art workshop and engineering team at its premises, so we can produce bespoke solutions to the specifications of our customers.

Taking our strengths and hard-working ethos we have gained from many years in the glass industry we ventured into the Stone trade a few years ago and have gone from strength to strength. Even against the unstable economy the UK has faced in the last few years, this increase has only shown true that our customer-comes-first mentality works. We continually work closely with our suppliers providing quality tooling to exceed our customers' needs and wants, creating solutions to customers' problems and providing methods to save both time and money.

We know that investing in CNC machinery is a big investment in your company's future and that peace of mind with quality and assistance is of the up most importance.

What sets us apart from other suppliers is that we have our own workshop, which enables us to manufacture our own wheels made from highest grade Italian diamond. With our vast knowledge in the trade, we aren't just a reseller, we know our stuff!

Over the years we have worked closely with our partners in Italy and produced quality, bespoke tooling which has solved many of the everyday problems our customers face.

We also offer a re-grind service to prolong the life of your tools, saving your company money.

Our experienced sales team works closely with our customers and all of them are always on the end of the phone and available to pop into factories to provide solutions for an easier life in the hectic work environment many of us face every day.

**DAVID
LITHAUER**
MANAGING DIRECTOR

"OUR AIM IS TO ALWAYS OFFER OUR CUSTOMERS OUTSTANDING QUALITY AND SERVICE TO RIVAL ANYTHING CURRENTLY ON THE MARKET AND WE CONTINUE TO STRIVE FOR THIS."

WELCOME TO THE WORLD OF ZAFFERANI



ABOUT

Zafferani Glas is the living and current result of a technological and entrepreneurial path, which began in the 1950s, which saw the company always at the forefront in the design, development, construction and marketing of glass processing machines. From the first realizations, today, in the Genoa plant of over 10,000 square meters, a constantly evolving production range has been reached, capable of covering almost all the needs of small and medium-sized enterprises in the glass sector.

The extreme simplicity of construction and total reliability are the main parameters of each of our projects. But the value of our work commitment and technological developments are aimed at seeking total customer satisfaction in a process of continuous quality improvement, which also includes the attention dedicated to the after-sales service.

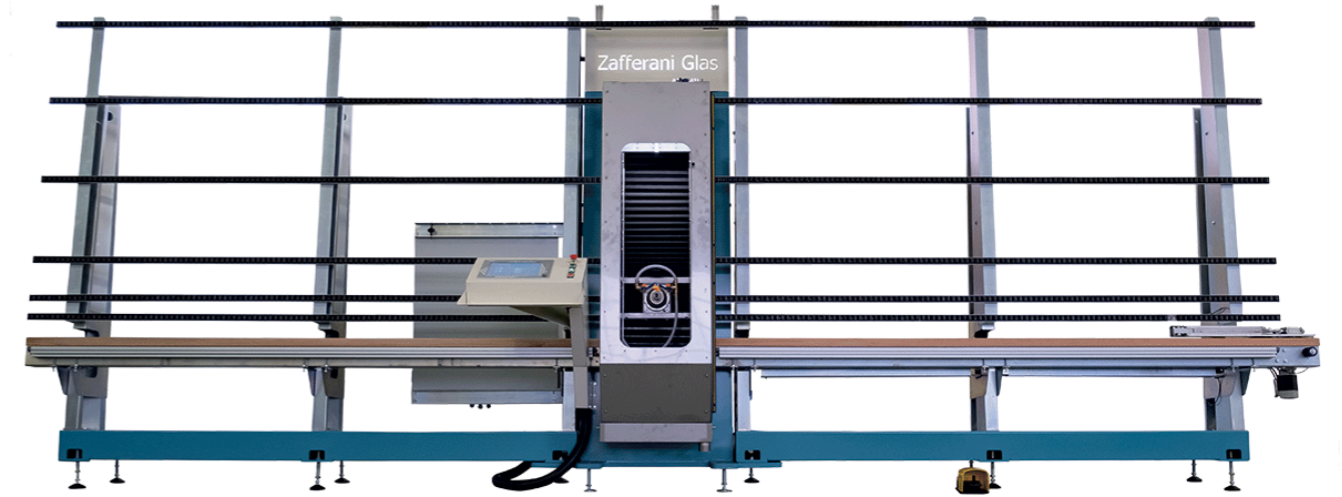
WHY CHOOSE ZAFFERANI?

Because Zafferani have combined listening to the market with the skills and experience gained in over half a century of activity.

Because from this comes the generation of new-concept machines that combine the solution of market needs with the historical reliability, economy and ease of use.

Because this allows even the smallest companies to carry out complex glass processing, up to now possible at high costs and therefore only for larger companies.

ZAFFERANI



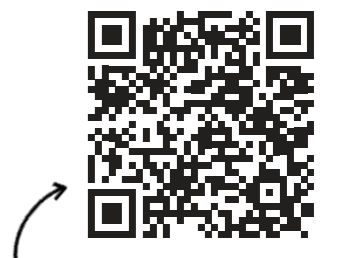
AZV Mill 1000 - Picture shows machine with full size out feed option 1, option 2 available with smaller out feed for limited space.

AZV MILL

AZV MILL 1000 is specifically designed for the execution of the classic "notches" needed to assemble maps, hinges, supports and related accessories.

Glass handling is fully automatic via an innovative PC-controlled clamp system. In the work area, the glass is held by independent pressers. For safety reasons, only when all the steps are meticulously followed, the machine can start any drilling/milling process.

The high-speed spindle is controlled in the 3 axis by brush-less motors and ball screws. The spindle control is controlled by a Touch Screen computer provided with a customer-friendly software that allows the loading of a series of different working programs.



Take a look at our website for more information and videos

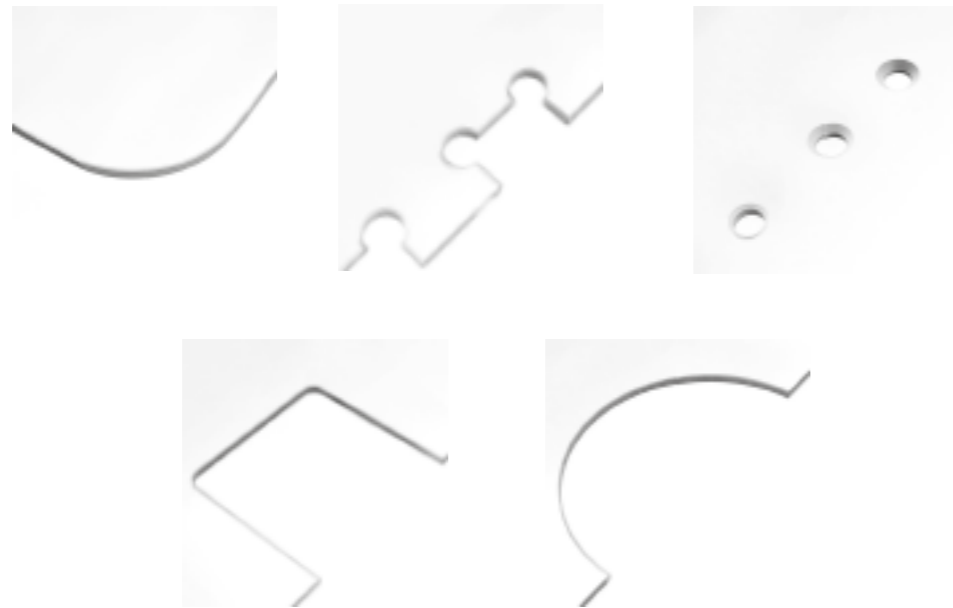
ADDITIONAL INFORMATION

Inside the working area of 200mm (horizontal) x 1000mm (vertical) any kind of shape can be performed. The main shapes are already pre-installed in the software and all of them can be fully customized and stored by the easy-to-use software.

Any not pre-installed shape can be easily imported and loaded in the software via a DXF format file. Thanks to the use of our special multiple tools, any kind of shape, corner or hole can be performed without changing the tool at any operation.

AZV Mill 1000 is designed for remote assistance by LAN or WIFI connection.

PROCESSINGS



TECHNICAL FEATURES

- Glass thickness: 4 - 25mm
- Working Area: 200 x 1000(h) mm
- MIN Workable Piece: 500 x 300mm
- MAX Glass size: 3400 x 3210mm
- Weight: 1500Kg
- Installed Power: 8,0 Kw
- Spindle MAX Speed: 9000 RPM
- Milling Tool Length: 75÷100mm

BESPOKE TOOLING

Our TRIO range is specially designed for the Zafferani AZV Mill 1000, combining a Router + Trap + Drill in one tool this is a must for any operator.



“CONFIDENCE IN SOFTWARE IS KEY”

MADE FOR GLASS PROCESSING

- Software and support from our in-house service and engineering department.
- Easy to use software
- Specially designed tooling that compliments the AZV Mill saving time and money.
- Perfect for small to medium glass processors looking to increase and modernise their production lines.

OPERATOR TRAINING

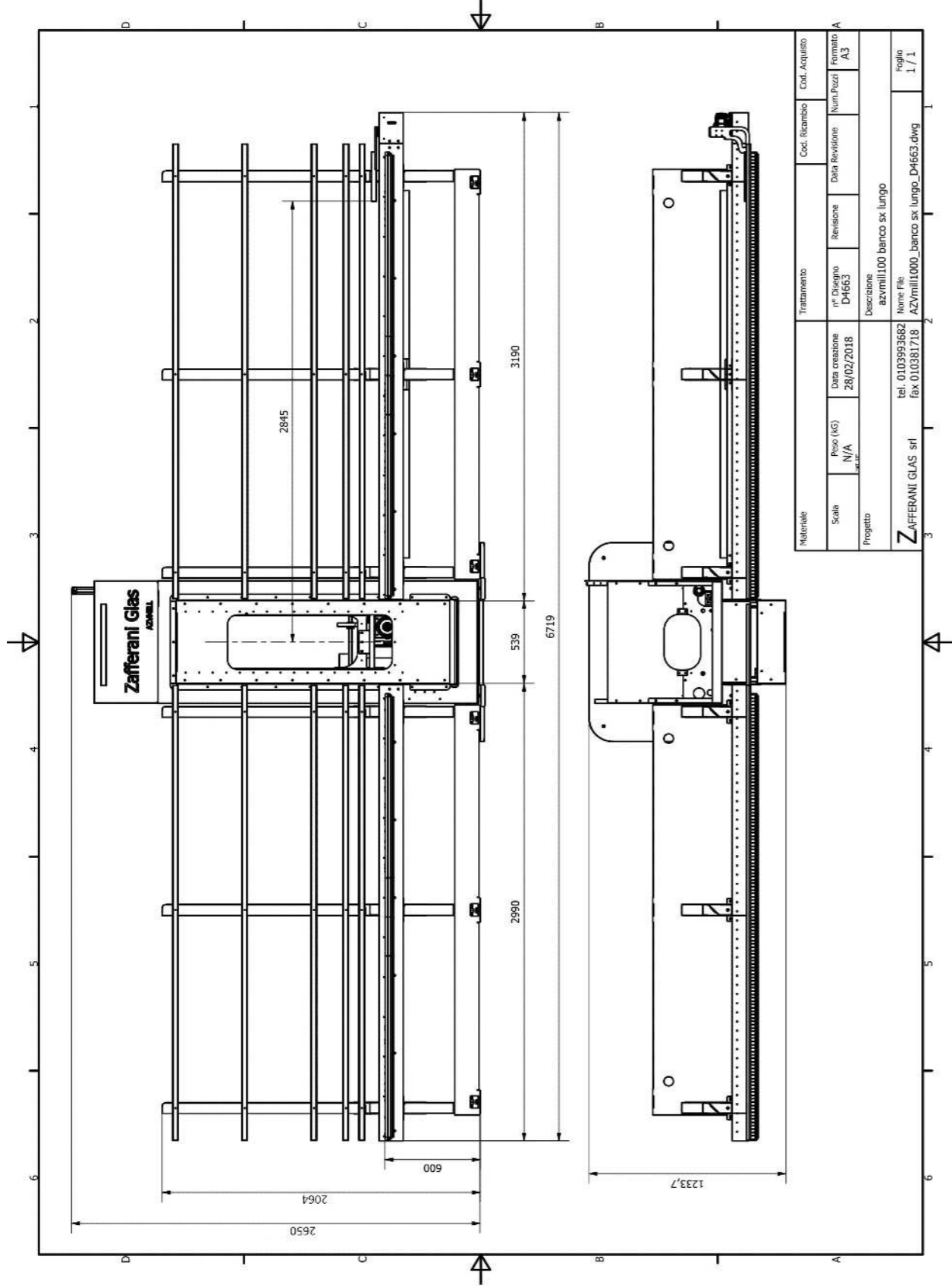
Confidence in software is key to getting the most from your investment. Training for operators can take place at our in-house training rooms at Vetro a week prior to delivery. Our aim is to make your machine work for you as quickly as possible after installation. Our engineers will make sure you are as prepared as possible.



*Software shown is for illustration purposes only

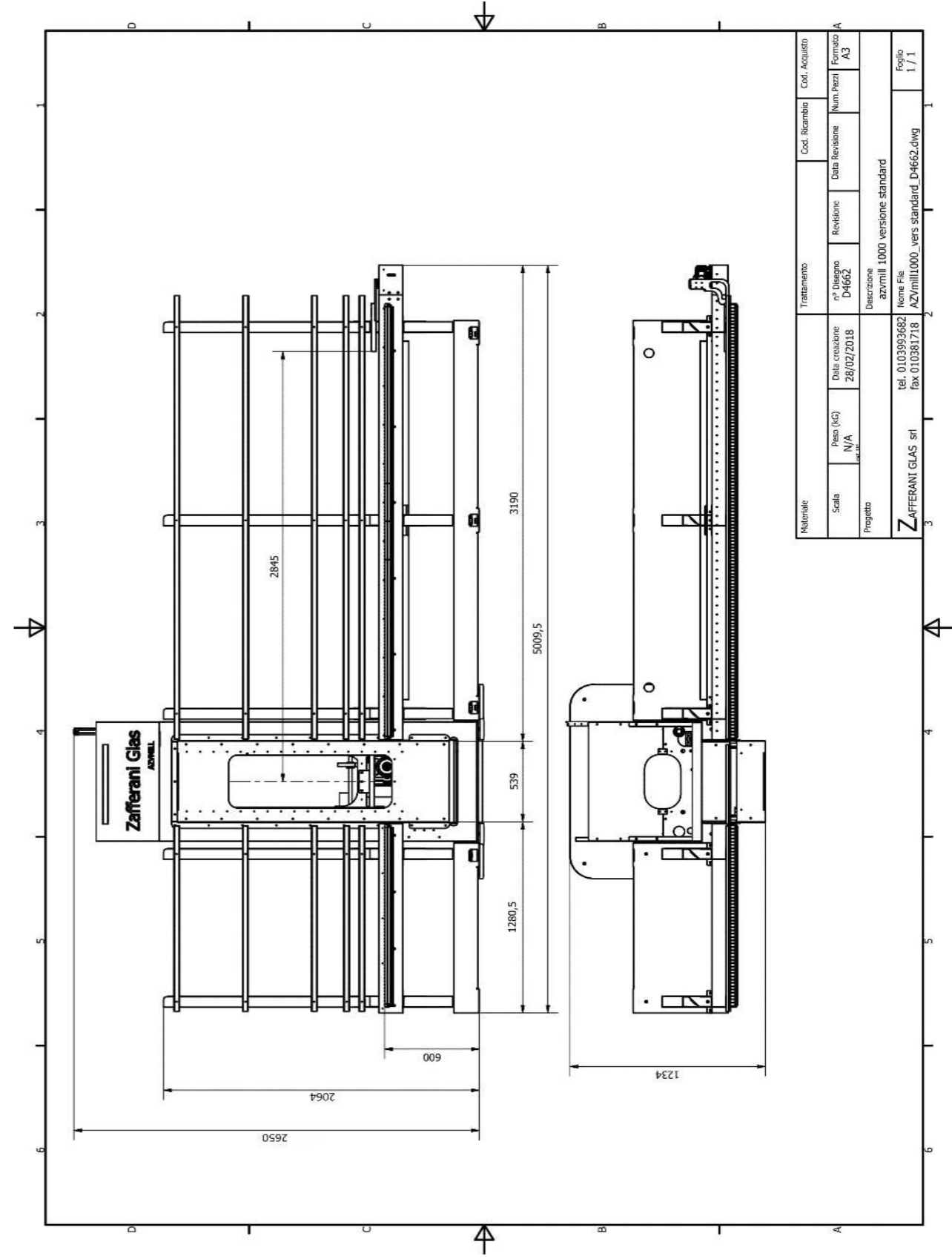
FLOOR PLAN

OPTION 1 - STANDARD OUTFEED



FLOOR PLAN

OPTION 2 - SHORT OUTFEED





SERVICE & REPAIRS

ENGINEERING SERVICE & REPAIRS

HOW WE DO SUPPORT

Vetro Tooling offers a warranty and support package for all machines sold that far exceeds anyone else's that is currently available. We have a name to uphold of quality and customer satisfaction and we don't plan on losing that. We know what machine down-time can cost a running factory and brake down's are a top priority for us to get you back up and running.

As well as warranty packages on new machine sales our engineers are always on call to carry out services or repairs to any CNC machine, Stone or Glass. With years of experience in machines, software and tooling we have every aspect covered.

After speaking to our customers we realised that the time for the engineer at there factory is more than valuable but paying hidden costs is not making anyone happy. We set out to give the customer a black and white charge so there are no nasty

surprises when the invoice lands on your desk.

As we carry an extensive stock of tooling and spare parts this also helps on lead times to have your CNC machines back up and running.

If you are looking at any service or repair work being carried out, just give us a call and we will be more than happy to run through the problems you are facing and get you back up to speed in no time!

